

> Back-up safety and all-round visibility for trucks and machinery



LIFETIME
WARRANTY^{***}

Introducing WhiteSound^{*}, the next generation of back-up safety!



Back-up alarms are vital for vehicle safety, yet their very use can cause noise nuisance, irritating workers and neighbors, especially when used out of normal working hours.

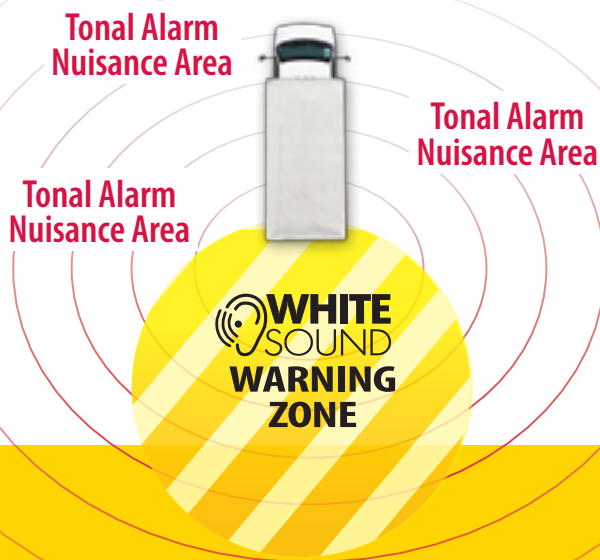
The WhiteSound alarm emits a unique “shh...shh...” sound which solves the problem. These bbs-tek[®] alarms emit multi-frequency broadband sound, replacing the narrow frequency band of tonal beepers. It is directional, concentrating the sound in the danger area, thus reducing noise nuisance. Also, it is much safer than tonal beepers; its sound is instantly locatable so you immediately know which vehicle is reversing and where it is coming from. Broadband sound also dissipates more quickly beyond the danger zone, so it is much less of a nuisance to local residents and is less likely to be ignored by workers due to over exposure of tonal beepers.

Many major commercial organizations and government bodies have already recognized the dual benefits of fitting WhiteSound to their public service vehicles, machinery and trucks. Available as heavy & medium duty back-up alarms, movement indicators, and constant tone alarms.

* bbs-92 model producing White Sound is listed in the New York City code.

Title 15 of the Rules of the City of New York, Chapter 28: Citywide Construction Noise Mitigation.

** See Brigade Lifetime Warranty Terms and Conditions



Fixed output range BBS-62 to BBS-87



Fixed output BBS-92 & BBS-97
Smart self-adjusting SA-BBS-97



Fixed output BBS-102 & BBS-107
Smart self-adjusting SA-BBS-107

“... so you immediately know which vehicle is reversing and where it is coming from.”



Value Color Ultra-Low-Light Cylinder Camera

VBV-481C

A high quality, flush mount, bumper fitting camera with 12 infrared LEDs for low light performance. Ideal for vans and cars and supplied with angle spacers for mounting on sloping surfaces.

Safety in driving - ideal in snow and wet conditions



- 298,000 pixels
- Wide field of view
- Automatic electronic iris
- 1.0 lux minimum illumination
- Waterproof (IP67)
- Operating temperature -4°F to +158°F

Color Flush Mount Camera

BE-300C

- Wide field of vision: front mount, rear mount, right side view, left side view or ceiling mount
- Can be linked to the MDR-304 digital video recorder systems
- Stay clean lens coating
- Sony CD for improved picture quality
- Flush mount for improved aesthetics
- 290,000 pixels
- Robust casing for outstanding protection from dust and water
- 100G mechanical shock

**Cost Savings include . . .
reducing rear or side
vehicle damage, property
damage, down time for
repairs, great value for
the money!**



These flush mount, streamlined & compact cameras can easily be placed anywhere on the vehicle.



Mobile Digital Recorders

MDR-304



The MDR 304 provides a high quality evidential audio visual record of continuous events or specific incidents.

The MDR-304 is fully compatible with all of Brigade's market leading camera-monitor systems. This means that any/all of the cameras to be recorded can also be displayed to the driver on a TFT LCD flat screen monitor in the cab. A typical integrated multi-benefit system would not only record the images from all 4 cameras, but also provide the driver with rear-view for reversing, and side-view for when indicating left and/or right. The MDR-304 can also be added into an existing Brigade camera-monitor system – eg a reversing camera system – that is already fitted to the vehicle.

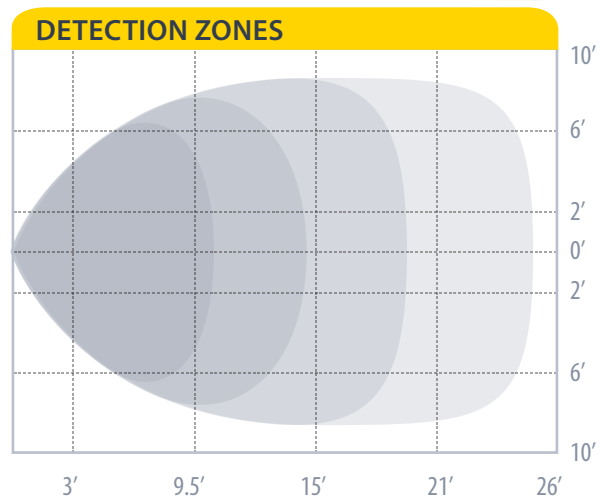
Low cost but packed with many useful features – great value for money.



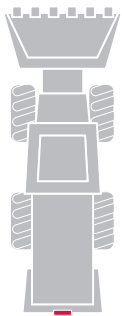
- Easy playback via 'DVD style' front panel – so no complicated training required for operators.
- Helps to prevent vandalism and aid detection – reducing costly vehicle down-time.
- Helps to lower vehicle insurance costs.
- High quality images from real time recording and playback (up to 25 frames per channel) – provide clearly identifiable pictures for resolving disputes and court cases.
- Prevents false claims for damage – by being able to show time, date and location of any supposed incidents.

Radar Back-up Sensor Systems

Backsense Radar Technology



Illustrative schematic for "2080" versions.



Radar back-up sensor system prevents accidents.

Backsense uses pulsed radar technology to detect site workers and objects at distances of up to 26 feet providing both an audio and visual warning to the operator, which makes it ideal for construction vehicles and mobile machinery. Since pulsed radar travels through plastic, the sensor is sealed inside the housing to ensure ruggedness and reliability. And now, our heavy duty Backsense allows for networking of multiple sensors to provide the greatest area of coverage, with programmable detection zones from 10 to 26 feet.

VEHICLE SAFETY SOLUTIONS

Brigade Electronics Inc. is the world market leader in vehicle reversing safety and all-round visibility which includes such technology as reversing alarms, camera systems, White Sound (broadband sound) reversing alarms (bbs-tek). Brigade's solutions have saved countless lives in over 30 years since the company pioneered the vital area of vehicle reversing safety.



PATHFINDER™

Turn night into day!

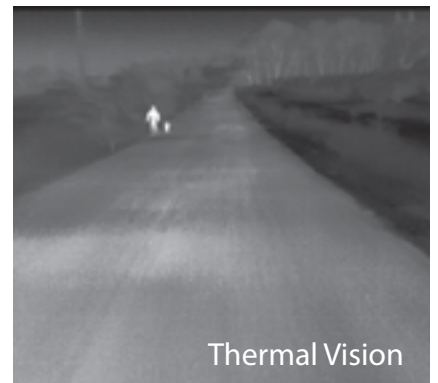
Thermal imaging cameras need no light whatsoever to produce a clear image. They operate in the darkest of nights.

The Brigade Electronics PathFindIR is a compact thermal imaging camera for integration in mining and quarrying vehicles. Even in total darkness, drivers need to see the condition of the terrain on which they are advancing. Thanks to the PathFindIR, wheel loaders, dump truck and service vehicle drivers can see clearly at night and even in fog, dust and bad weather to identify people, animals and objects and thus prevent accidents and damage.

- Sees up to 5x further than headlights
- Significantly increases situational awareness
- Produces a clear image in total darkness
- Helps to avoid accidents
- Is easy to install in existing vehicles



Normal Vision



Thermal Vision



Brigade Electronics Inc.,

the world market leader in vehicle reversing safety and all-around visibility.

- *WhiteSound "Noiseless" back-up alarms*
- *Ultra-low-light cylinder cameras*
- *Flush mount cameras*
- *Mobile digital recorders*
- *Radar back-up sensor system*
- *Thermal imaging cameras*



Brigade's solutions have saved countless lives in over 30 years since Brigade pioneered the vital area of vehicle reversing safety.

For sales email: sales@brigade-inc.com

For general information email: info@brigade-inc.com



Toll free: 1 888-7BRIGADE (888-727-4423)

Phone: 610-826-7870 Fax: 484-229-0088 www.brigade-inc.com

Brigade Electronics Inc. 202 Delaware Avenue, Suite 1, Palmerton, PA 18071